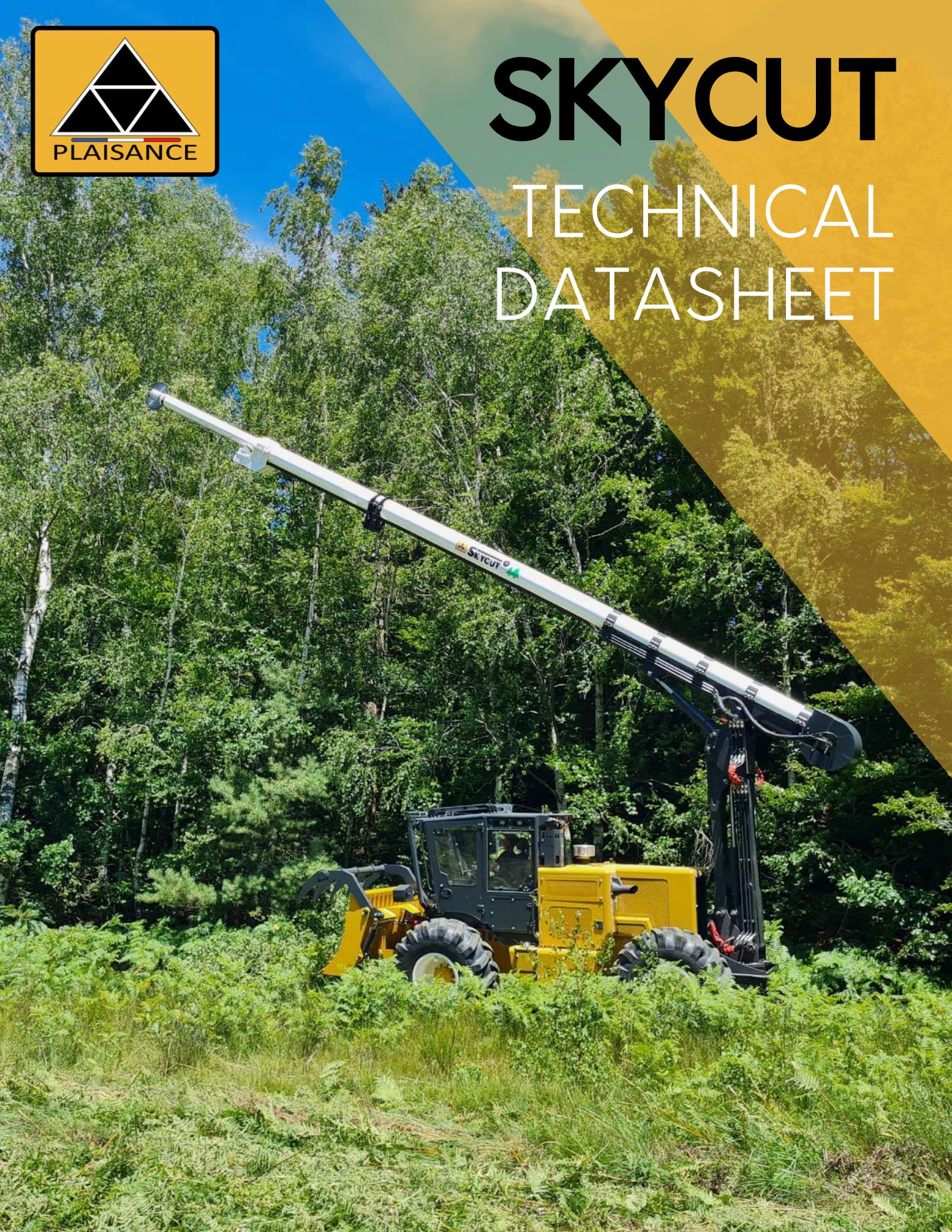




SKYCUT

TECHNICAL DATASHEET



CONTACT US:

1 Grande rue
54540 MONTIGNY, FRANCE
Tél : +33 3 83 42 15 79



WWW.PLAISANCE-EQUIPEMENTS.COM

G E N E R A L I N F O	Constructor:	PLAISANCE EQUIPEMENTS SAS
	Brand:	Plaisance
	Type:	Self-propelled machine (MAGA)
	Version:	SKYCUT 2.0
	Power grip:	Hydraulic
	Weight:	10,3 tonnes

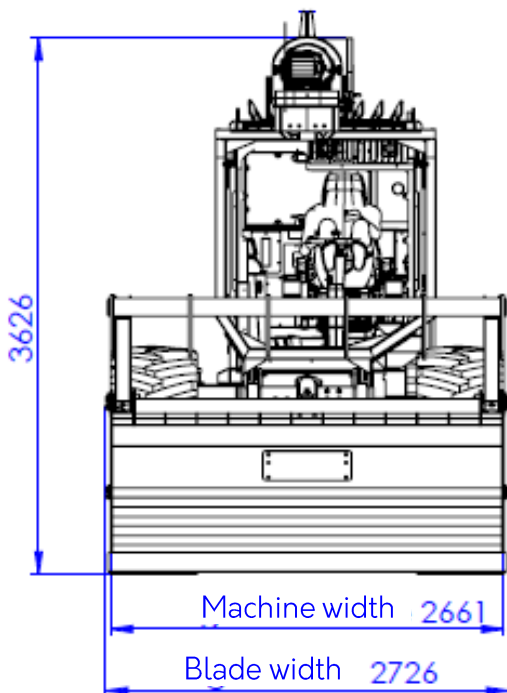
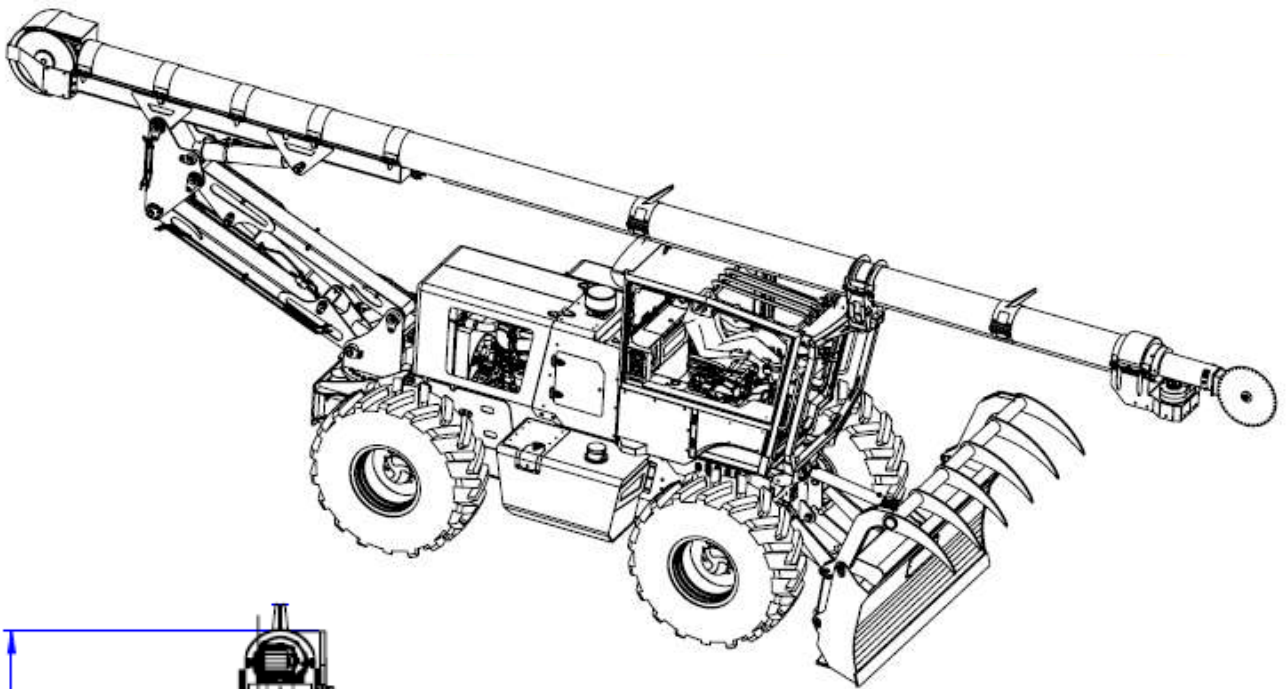
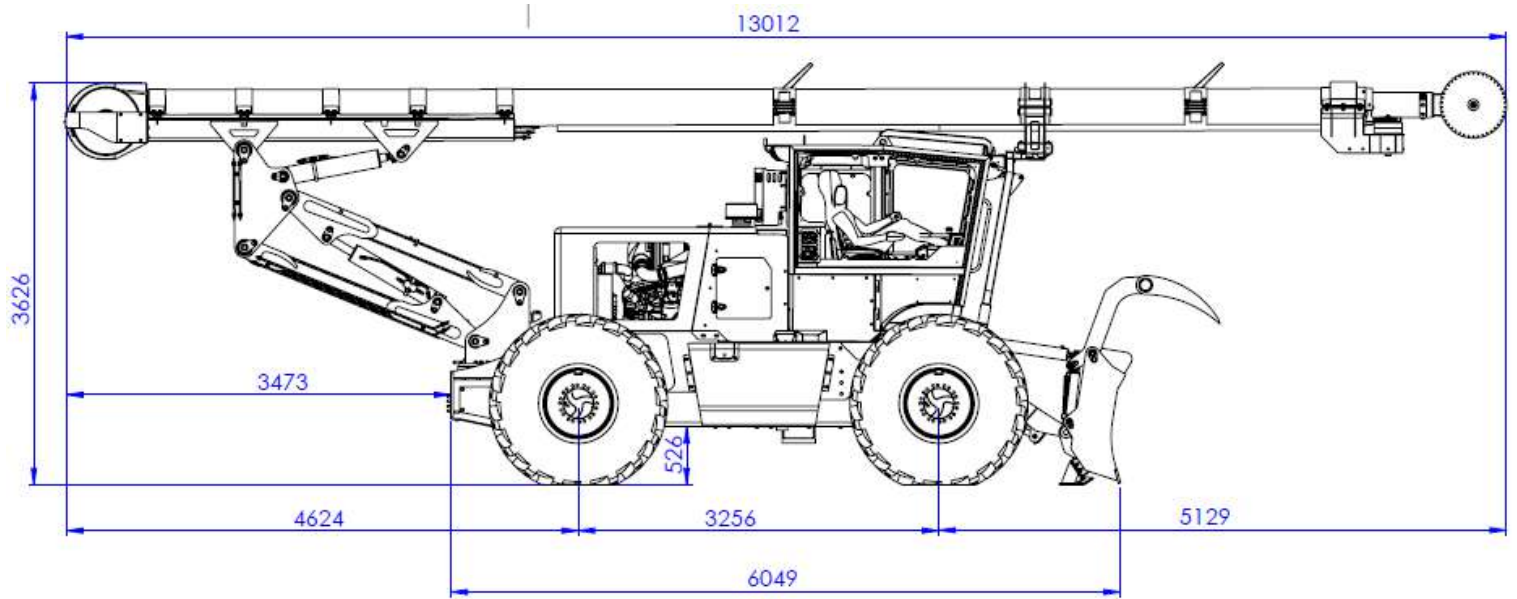
F E A T U R E S	Advancement:	Hydrostatic advancement with 2 speed ranges.
		Number of axles and wheels: 2 motorized steering axles and 4 simple wheels (self-locking in the front and mechanic behind).
		4 driving wheels.
		Steering mode: 2 front wheels steering (for circulation), 4 wheels steering (for work).
	Pruning arm:	25 meters fiberglass telescopic arm (non conductive of electrical voltage).
		New conception: Telescope translation system without belt or chain inside, transmission elements outside the arm and cable reel without spring.
		180° amplitude of movement.
		Saw head rotation capacity : 180°
	Tyres:	Type: FORESTRY-345 23.1/26
		Diameter: 1607mm
		Width: 587mm
		Wheelbase: 3257mm
Chassis:	Self-supporting chassis made of welded steel. Floating motor-box set. Full shielding.	
Engine location and layout:	At the back, longitudinal.	
Driver's cab location:	Front central position between front axle and rear axle.	

E N G I N E	Denomination :	VOLVO PENTA Type: TAD583VE – Stage 5
	General description:	Inner combustion engine.
		Power: 238 Hp / 175 kW – Engine capacity: 5,13 l
		Cycle : Diesel
	Number and disposition of cylinders:	4 cylinders in line.
	Maximum torque:	950 Nm at 1300 rotation/min.
	Maximum rotation speed:	2310 rotation/min.
	Engine power supply mode:	Common rail fuel injection.
	Air filter type:	Dry, with cartridges.
	Ignition:	By compression.
Engine cooling:	By forced water circulation and water cooler. Automatic and programmable fan with reversible blades.	
C O N F O R T + C A B	VISION + windscreen:	Anti-reflection cab. Inclined windshield and panoramic side window.
	Panoramic roof:	Large panoramic roof (opening on 70% of the surface) for an optimized view.
	Display and control:	Digital touch display (gauges, indicators, diagnostic, setting...)
		Advancement control by front/rear foot pedal and mechanical inversion by joystick.
	Safety:	Lexan-Margard® safety glass 12 mm.
		Anti-perforation grid in Hardox on the roof.
		100 kV approval in situation guaranteeing the arm electrical non-conductivity under the test conditions.
	Equipments:	New cab, air-conditioned, soundproof, pressurized and comfort damping system. Cabin and hood are accessible by electro-hydraulic system with button.
Work light: 2 front headlights and 2 rear headlights.		
High comfort seat (Public works type).		
Stereo USB-Bluetooth radio.		

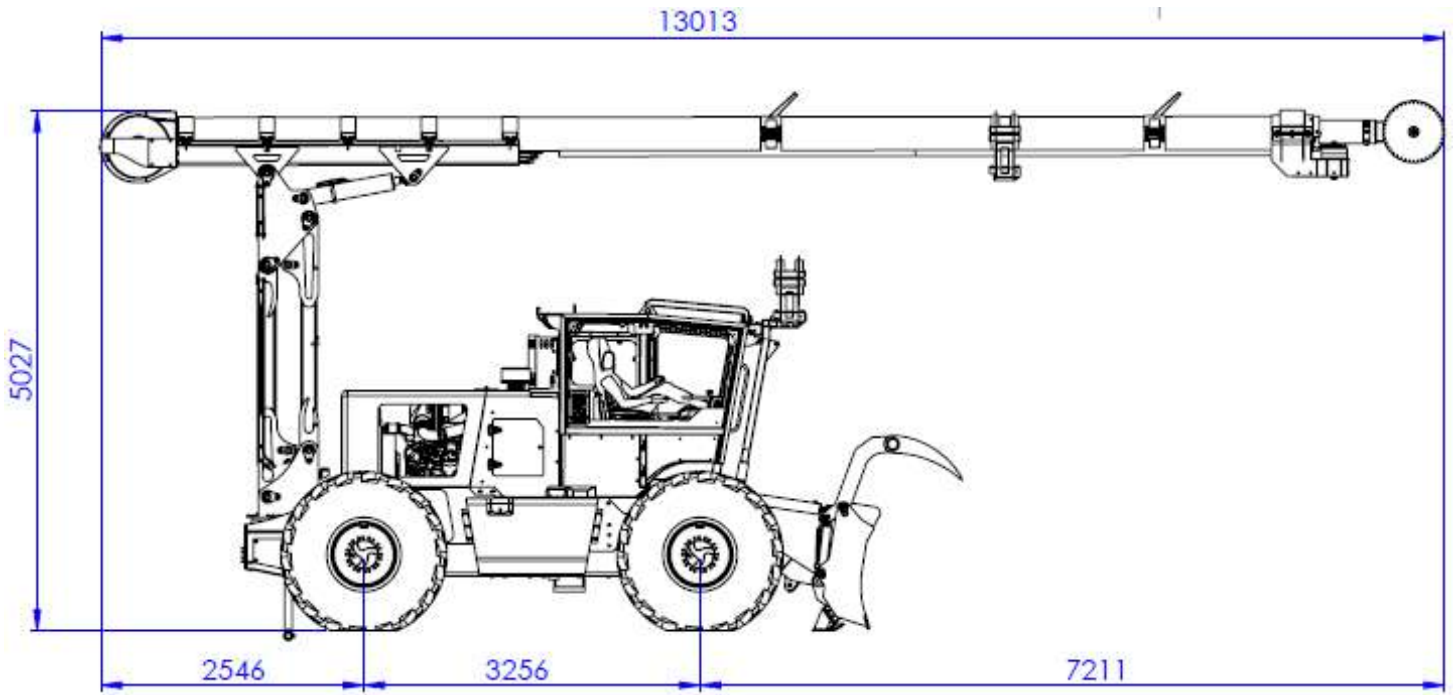
E X T R A I N F O R M A T I O N	Fuel type:	Diesel
	Fuel tank:	330 liters metallic tank fixed on the right side of the chassis.
	Hydraulic tank:	195 liters metallic tank fixed on the left side of the chassis.
	AdBlue tank:	45 liters on the right side in the fuel tank.
	Option:	Possibility to install an hydraulic front mulcher with fixed hammers.

B L A D E	Conception:	Mechanical welded front blade in Hardox.
	Hitch:	Hardox

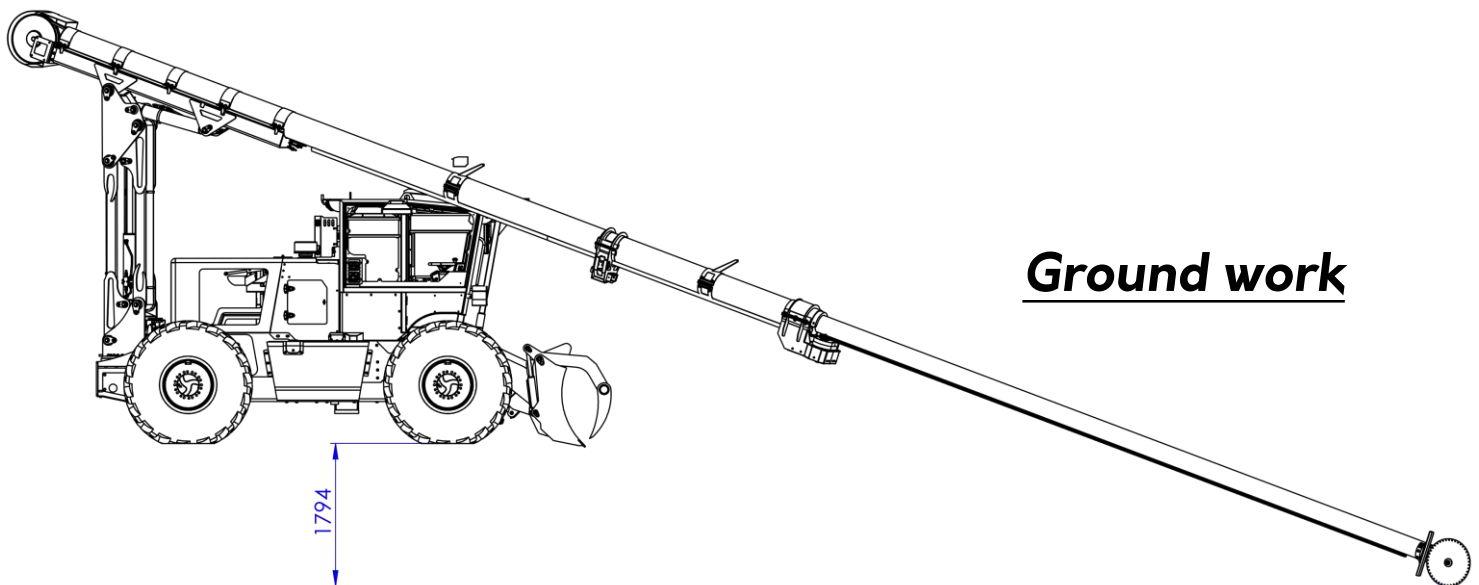
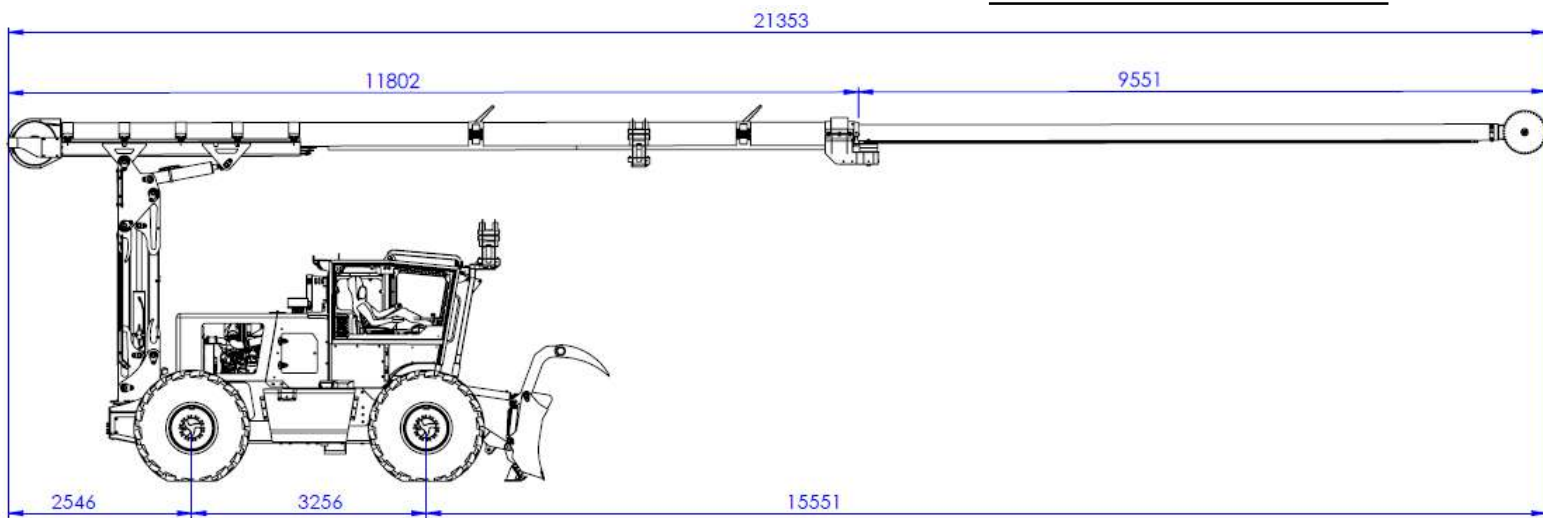
Dimensions (mm)



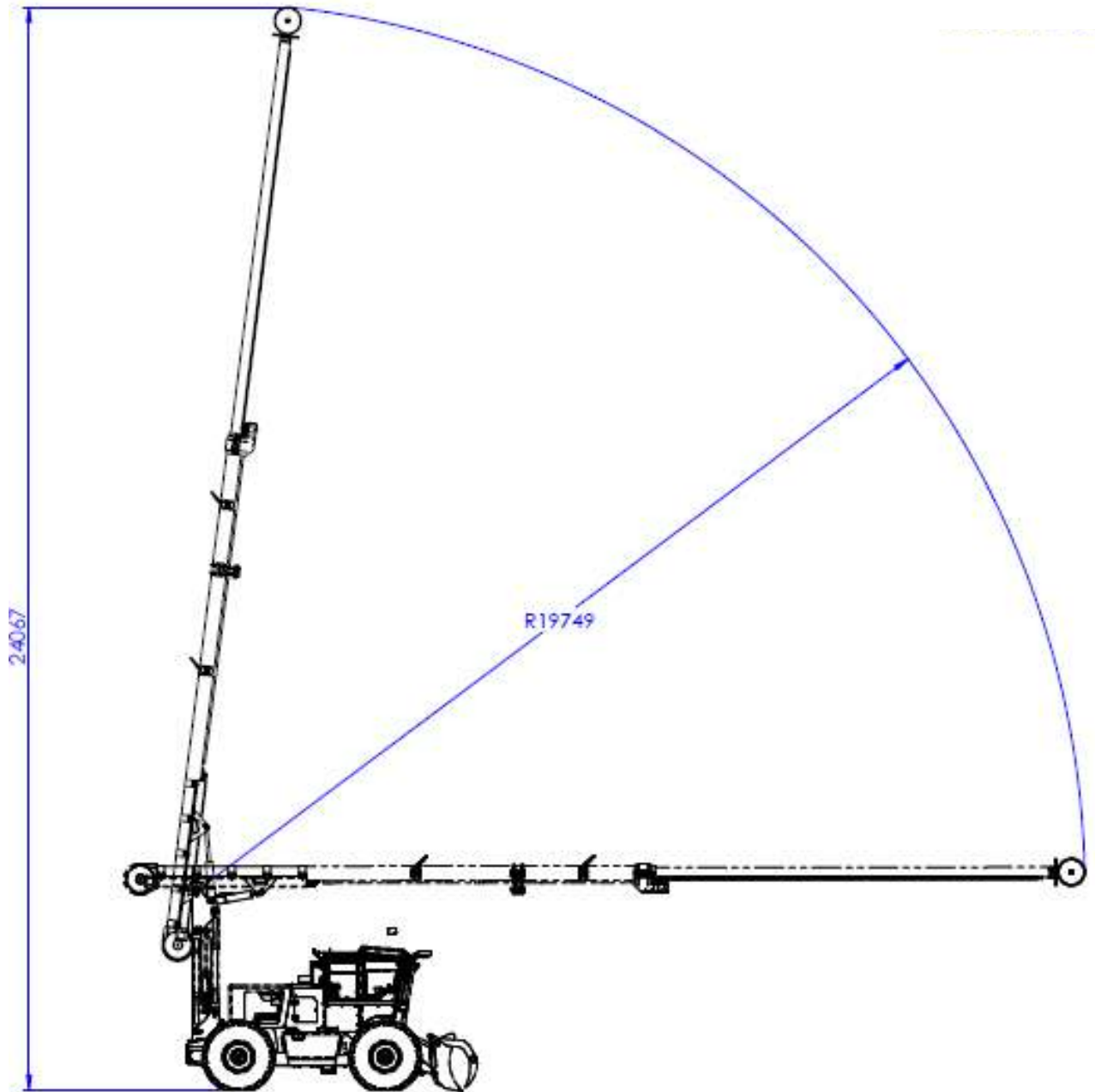
Mode of transport



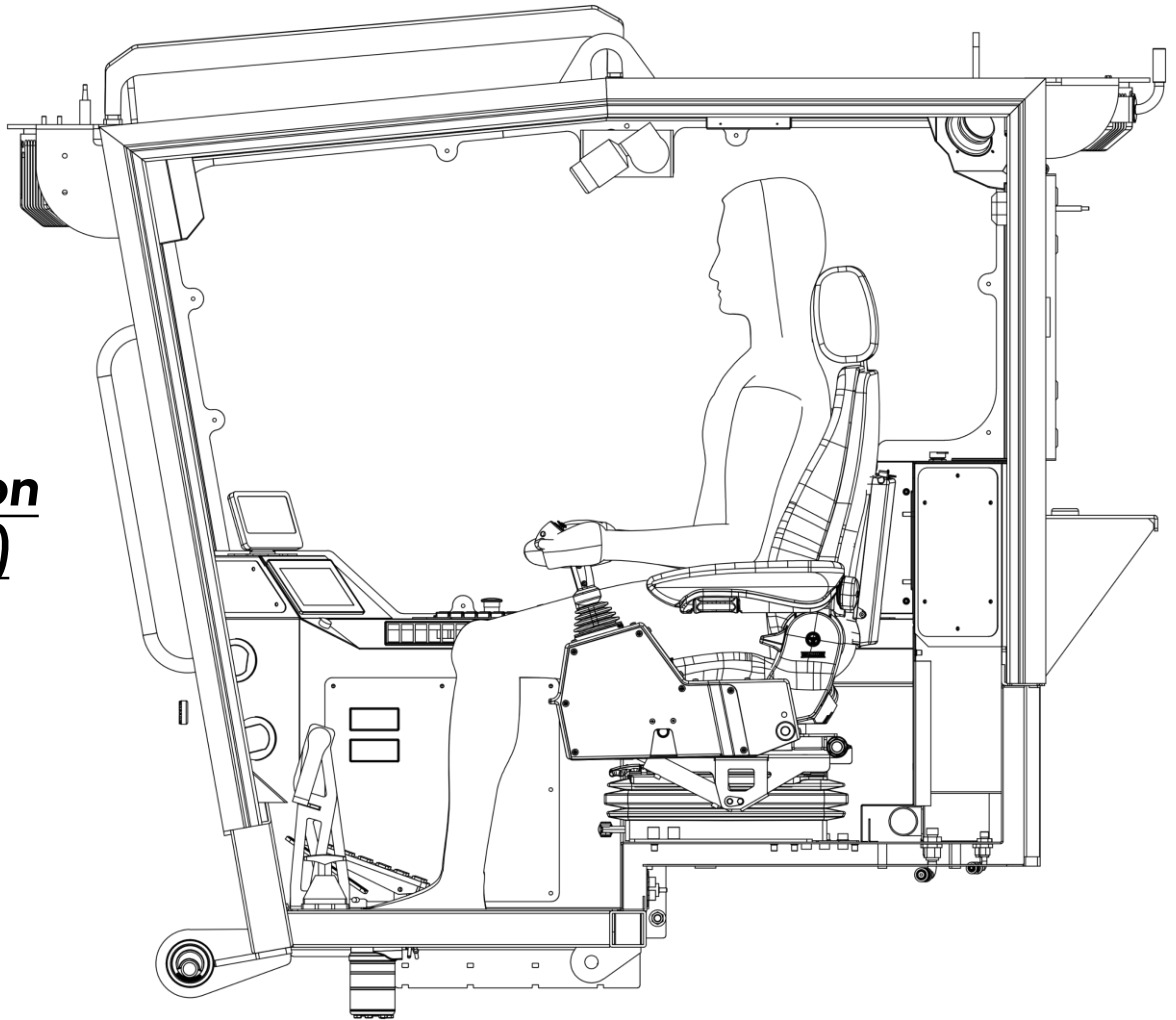
Horizontal work



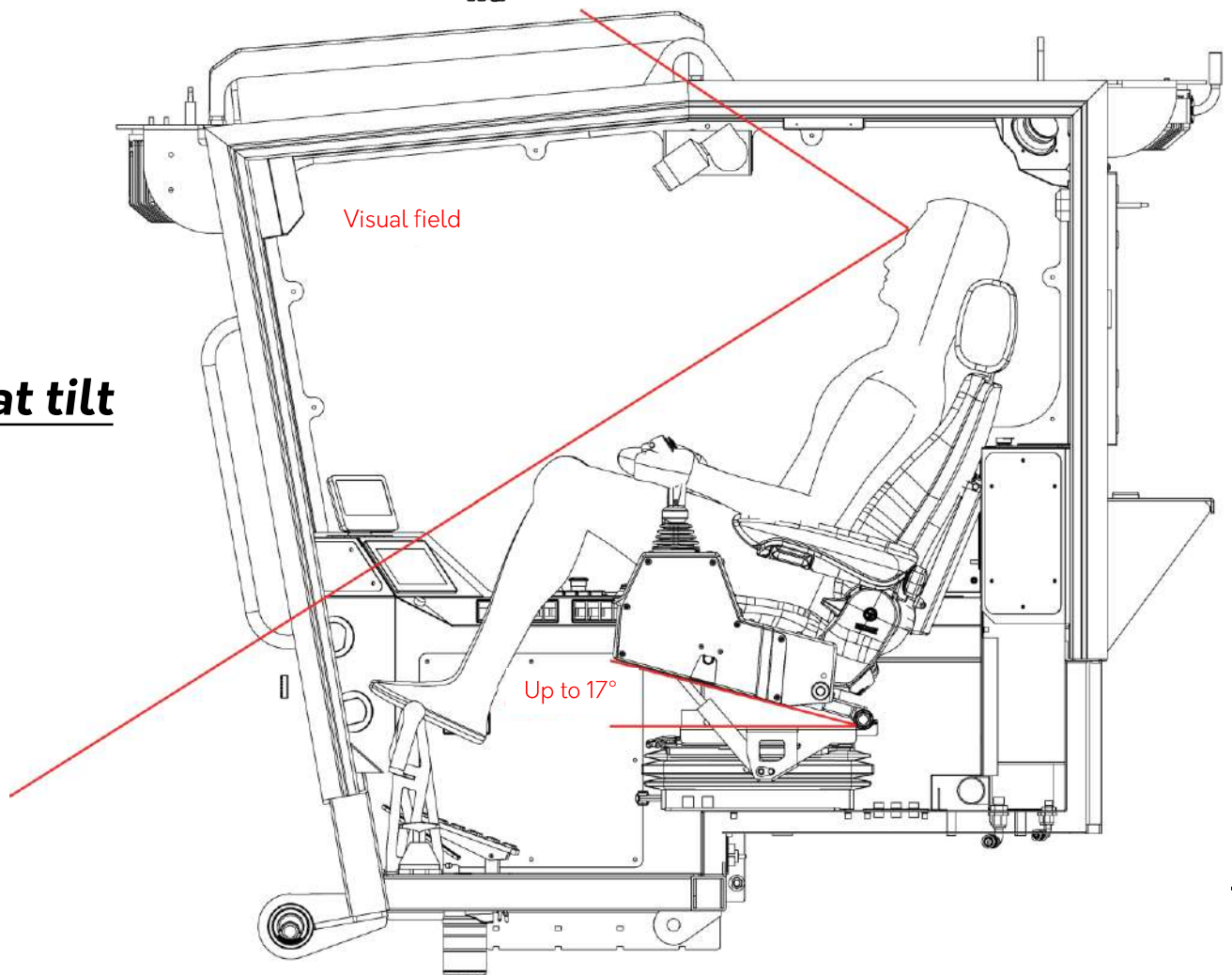
Ground work



Seat position (standard)



Seat tilt











Seat
reclines
up to 17°

