



# **TECHNICAL DATASHEET**

## **BS 702**

CONTACT US:

1 Grande rue  
54540 MONTIGNY, FRANCE  
Tel: +33 3 83 42 15 79



[WWW.PLAISANCE-EQUIPEMENTS.COM](http://WWW.PLAISANCE-EQUIPEMENTS.COM)

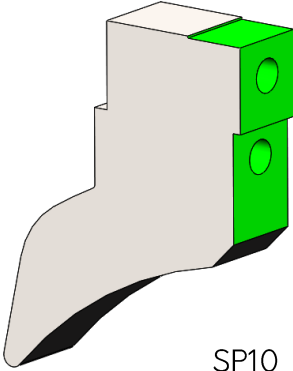
# BS 702

## GENERAL INFORMATION

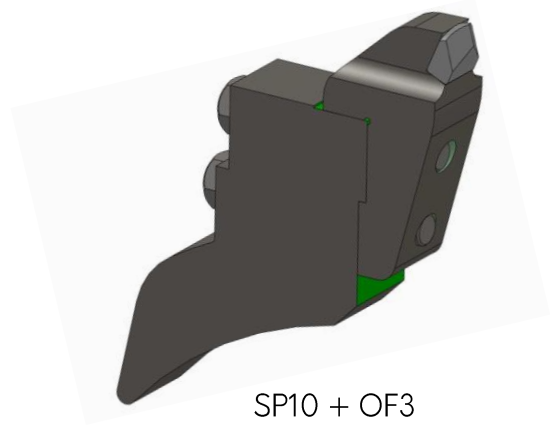
|                                    |   |       |
|------------------------------------|---|-------|
| <b>Rotor widths</b>                | 2 m   | 2,2 m |
| <b>Rotor diameter</b>              | 690 mm  |       |
| <b>Use</b>                         | Ground crushing   |       |
| <b>Work depth</b>                  | Until 30 cm   |       |
| <b>Teeth</b>                       | Single carb tips<br>+ side teeth                          |       |
| <b>Tools position on the rotor</b> | Fixed – Helical and V positions                           |       |
| <b>Mulcher power accepted</b>      | 180 to 450 hp   |       |
| <b>Mechanical drive</b>            | 1 polychain belts in carbon by side                       |       |
| <b>Curtain of chains</b>           | Antiprojection triple curtain of chains                   |       |
| <b>Protection door</b>             | Hydraulic with two heavy duty cylinders                   |       |
| <b>Frame</b>                       | Full reinforced HARDOX®                                   |       |
| <b>Roller bearing holders</b>      | Heavy duty roller bearings<br>with double rows of rollers |       |
| <b>Bearings</b>                    | Mass cut steel bearing                                    |       |
| <b>Skids</b>                       | HARDOX 450® soles   |       |
| <b>Protections</b>                 | Anti-wire cut in mass, bolted and interchangeable         |       |
| <b>Hitch</b>                       | 2 <sup>nd</sup> and 3 <sup>rd</sup> categories            |       |

# SINGLE CARB TIP TEETH

## HOLDERS



SP10



SP10 + OF3

## TEETH



Wood tool  
Single carb tip

OF3  
90 to 102 teeth



Wood tool  
Single carb tip

OF8  
90 to 102 teeth

## SIDE TEETH



Side tool  
Double carb tip

OFL1  
2 side teeth



Side tool  
Quadruple carb tip

OFL2  
2 side teeth

*Our side teeth are the same on the left and on the right.*



## THE **STRENGTHS** OF OUR MULCHERS



**Saving time:** Continuous hydraulic setting of the working depth from the cab thanks to the 3rd hydraulic point.



**Profitability:** High work flow and low cost of wear parts.



**Exceptional blending quality:** The hammers helical disposition ensures a homogeneous mix, reduces the power demand and increase the fertility.



**Heavy-duty design** inspired by Publics Works thanks to the use of high quality materials.



**Simplicity and reliability of the kinematics** (with few maintenance) allows a profitability gain.



**Design in the rules of mechanics.**

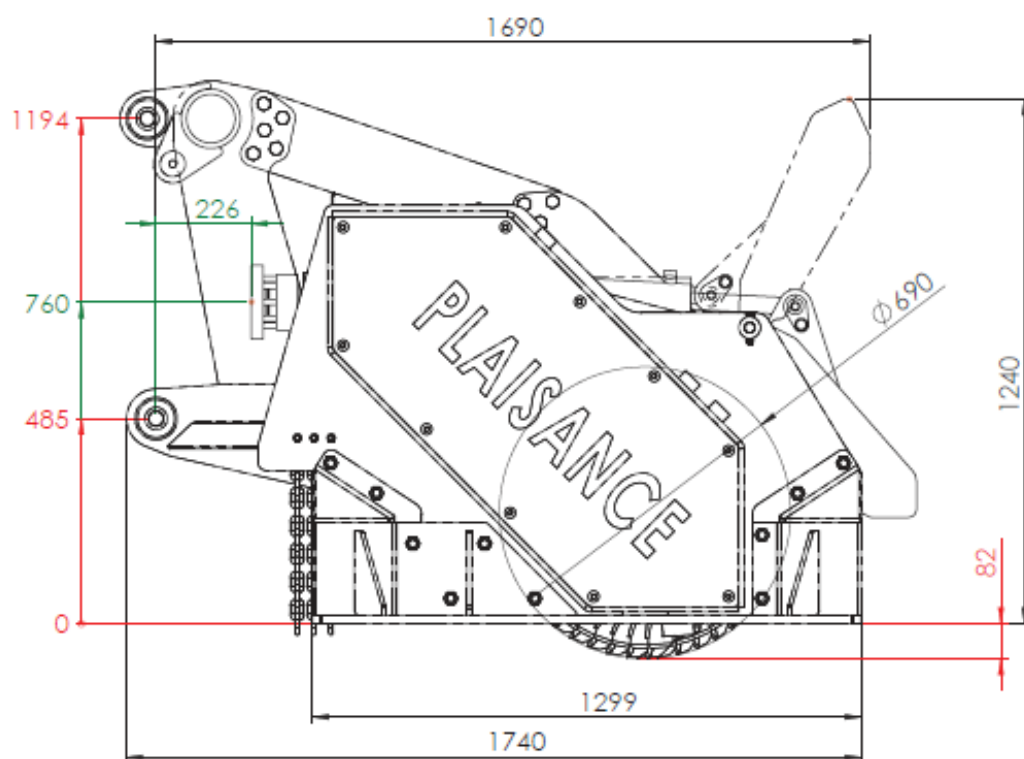
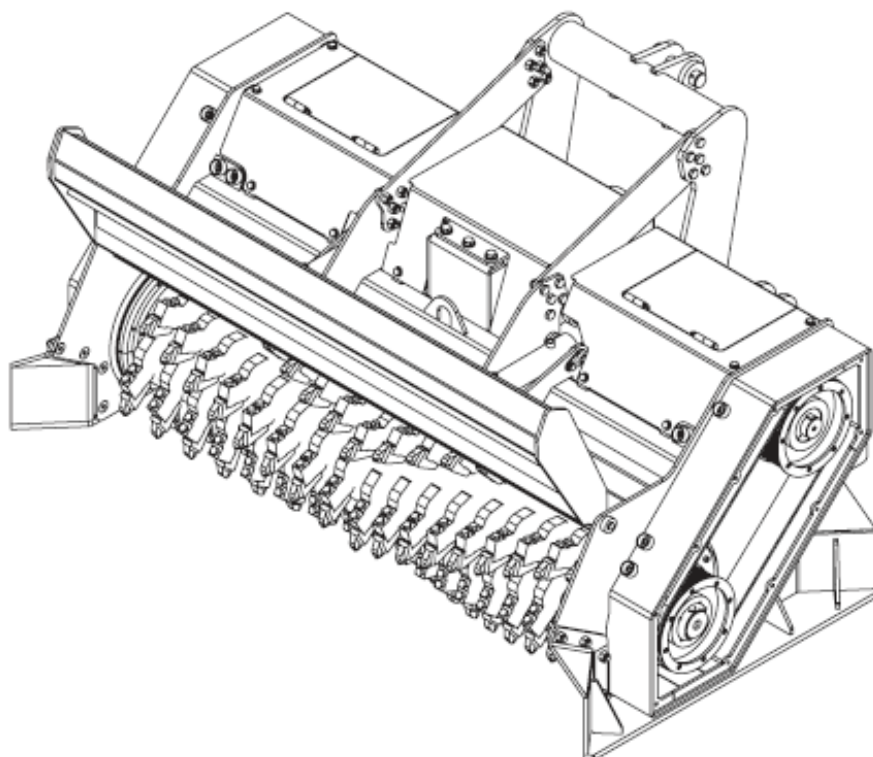


**Fuel economy.**

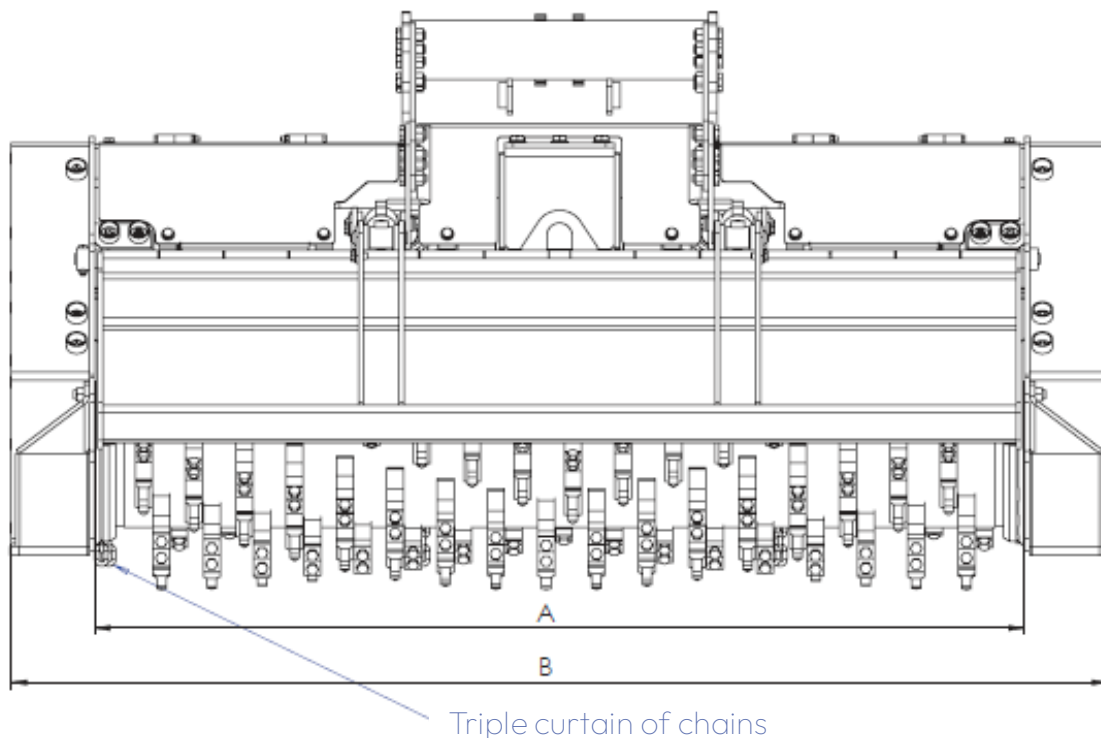


**Cost of use per hectare under all competitors.**

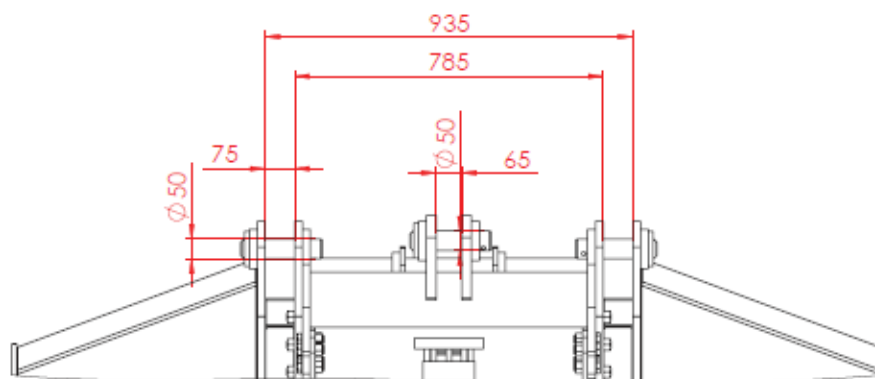
## PLANS AND DIMENSIONS (mm)



## WEIGHT AND DIMENSIONS (kg and mm)



| Working width (A) | Overall width (B) | Mass    |
|-------------------|-------------------|---------|
| 2000 mm           | 2400 mm           | 3390 kg |
| 2200 mm           | 2600 mm           | 3540 kg |



Illustrations and dimensions are for indication only.  
PLAISANCE EQUIPEMENTS reserves the right to modify them without notice.  
This plan is the property of PLAISANCE EQUIPEMENTS and may not be reproduced or communicated without permission.  
All rights reserved.