



TECHNICAL DATASHEET

BM 550

CONTACT US:

1 Grande rue
54540 MONTIGNY, France
Tel: +33 3 83 42 15 79



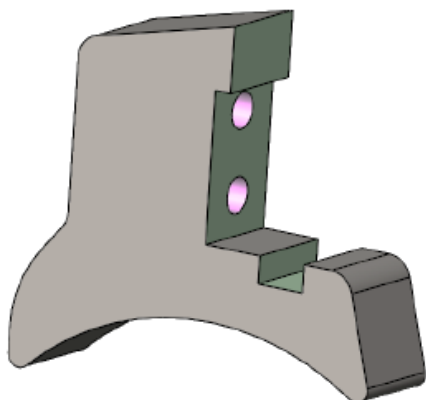
WWW.PLAISANCE-EQUIPEMENTS.COM

BM 550

GENERAL INFORMATION

| Rotor widths | 1,6 m | 1,8 m | 2 m | 2,2 m |
|--|--|-------|-----|-------|
| Rotor diameter | 500 mm | | | |
| Use | Stone crushers | | | |
| Teeth | Single carbide tip | | | |
| Teeth position on the rotor | Fixed - Helical and V positions | | | |
| Working depth | - 150 mm | | | |
| Engine power | 110 to 200 hp | | | |
| Side belt transmission to rotor | 5 V-belts by side | | | |
| Curtain of chains | Anti-projection double curtain of chains | | | |
| Protection door | Hydraulic with two cylinders (public works) | | | |
| Frame | Strengthen - High tensile steel and HARDOX® | | | |
| Rollings | Heavy duty roller bearings with double rows of rollers | | | |
| Rotor axis | Bolted shafts | | | |
| Skids | HARDOX 450® adjustable soles | | | |
| Protections | Anti-wire cut in mass, bolted and interchangeable | | | |
| Gearbox | 400 hp | | | |
| Hitch | 2 nd and 3 rd hydraulic points | | | |

HOLDERS



SP20



SP20 + OM5

TEETH



Stone tool
Single carb tip

OM5
40 to 55 teeth



Stone tool
Double carb tip

OF11
40 to 55 teeth

SIDE TEETH



Side tool
Double carb tip

OFL11
2 side teeth



Side tool
Triple carb tip

OFL8
2 side teeth

Our side teeth are the same on the left and right.

THE **STRENGTHS** OF OUR MULCHERS



Saving time: continuous hydraulic setting of the working depth from the cab thanks to the 3rd hydraulic point.



Profitability: high work flow and low cost of wear parts.



Exceptional mixing quality: the helical teeth ensures a homogeneous mix, reducing power demand and increasing fertility.



Heavy-duty design inspired by Publics Works thanks to the use of high-quality materials.



Simplicity and reliability of the kinematics (with few maintenance) allows a profitability gain.



Design in the rules of mechanics

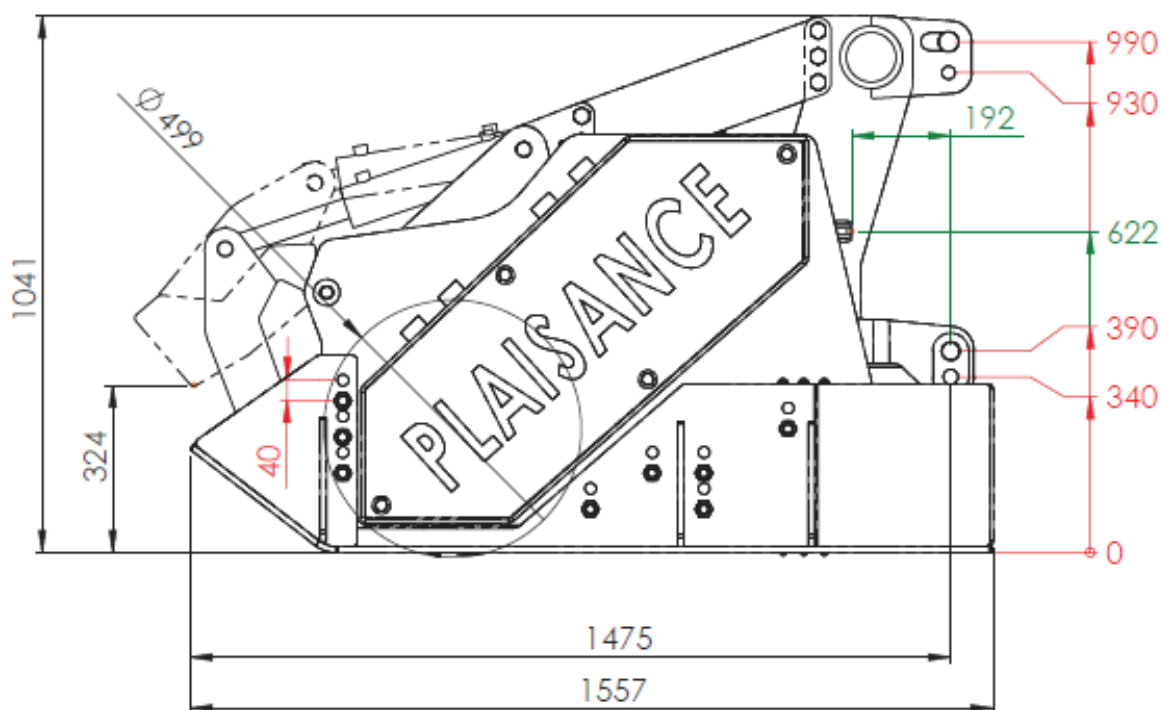
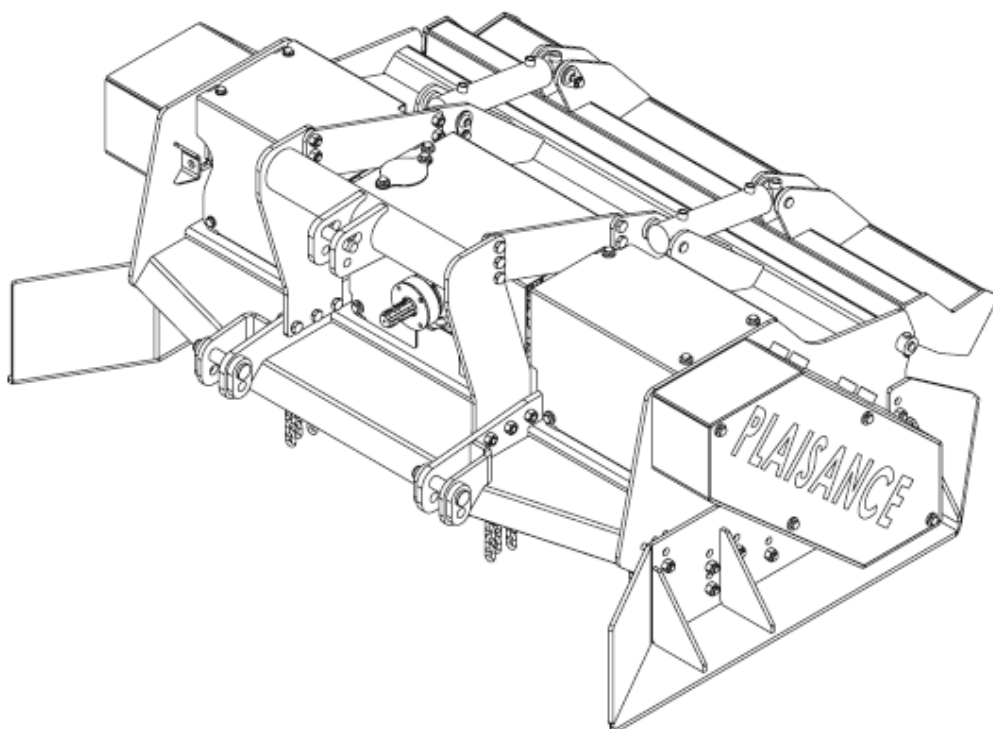


Fuel-efficient due to low drawbar pull

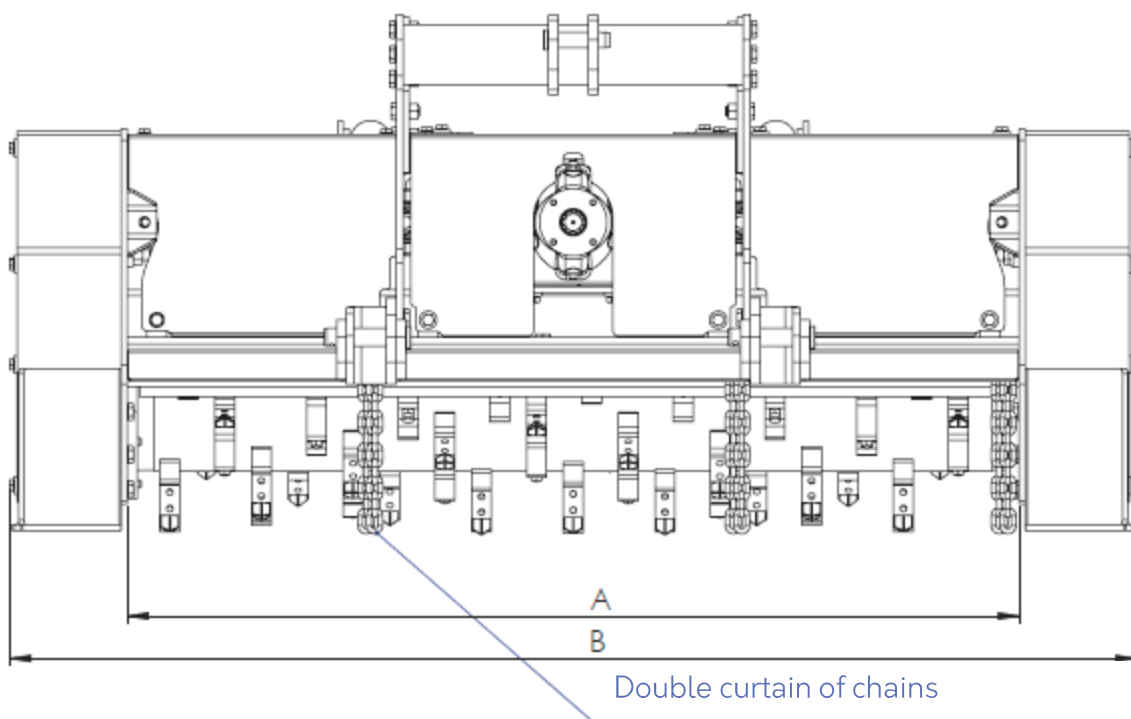


Cost of use per hectare below all competitors

PLAN AND DIMENSIONS



WEIGHT AND DIMENSIONS (kg and mm)



| Working width (A) | Overall width (B) | Weight |
|-------------------|-------------------|---------|
| 1800 mm | 2295 mm | 1920 kg |
| 2000 mm | 2495 mm | 2050 kg |
| 2200 mm | 2695 mm | 2160 kg |

Illustrations and dimensions are for indication only.
PLAISANCE EQUIPEMENTS reserves the right to modify them without notice.
This plan is the property of PLAISANCE EQUIPEMENTS and may not be reproduced or
communicated without permission.
All rights reserved

