



# TECHNICAL DATASHEET

## BF 552H

### CONTACT US:

1 Grande rue  
54540 MONTIGNY, France  
Tel: +33 3 83 42 15 79



[WWW.PLAISANCE-EQUIPEMENTS.COM](http://WWW.PLAISANCE-EQUIPEMENTS.COM)



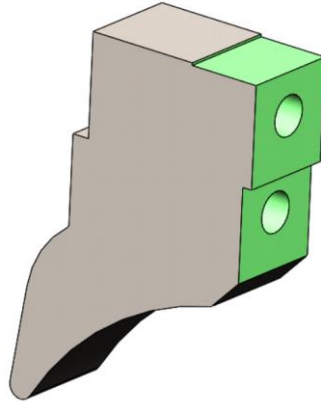
# BF 552H

## GENERAL INFORMATION

<b>Rotor width</b>	2 m	2,2 m
<b>Rotor diameter</b>	500 mm	
<b>Use</b>	Forestry mulching	
<b>Teeth</b>	Single or double carbide tips + side teeth	
<b>Teeth position on the rotor</b>	Fixed - Helical and V positions	
<b>Accepted flow</b>	250 to 400 liters	
<b>Supported pressure</b>	320 to 450 bars	
<b>Side belt transmission to rotor</b>	2 polychain belts in carbon	
<b>Curtain of chains</b>	Double anti-projection curtain of chains	
<b>Hydraulic rake</b>	With two cylinders (public works)	
<b>Protection door</b>	Hydraulic with two cylinders (public works)	
<b>Frame</b>	Strengthen - High tensile steel	
<b>Rolling</b>	Heavy duty roller bearings with double rows of rollers. Setted up in precision-cut steel bearings.	
<b>Rotor axis</b>	Bolted shafts	
<b>Skids</b>	HARDOX 450® soles Adjustable in 3 positions : + 45 mm / 0 mm / - 45 mm	
<b>Protections</b>	Anti-wire cut in mass, bolted and interchangeable	
<b>Hydraulic drive system</b>	Double engine	
<b>Hitch</b>	2 <sup>nd</sup> and 3 <sup>rd</sup> hydraulic point	

# HOLDERS & TEETH

## HOLDERS



SP24

## TEETH



Wood tool  
Single carb tip

OF3  
75 to 95 teeth

## SIDE TEETH



Side tool  
Double carb tip

OFL1  
2 side teeth

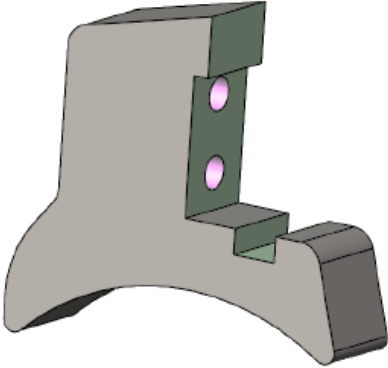


Side tool  
Quadruple carb tip

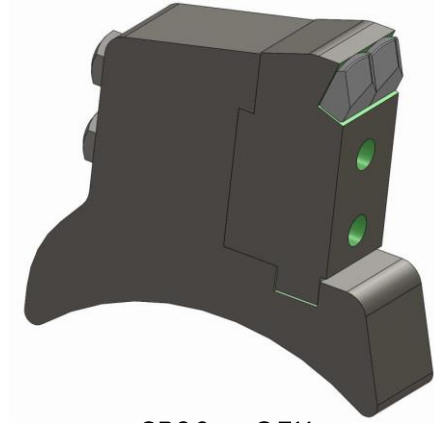
OFL2  
2 side teeth

*Our side teeth are the same on the left and right.*

## HOLDERS



SP20



SP20 + OF11

## TEETH



Wood tool  
Double carb tip

OF11  
45 to 55 teeth



Stone tool  
Single carb tip

OM5  
45 to 55 teeth

## SIDE TEETH



Side tool  
Double carb tip

OFL11  
2 side teeth



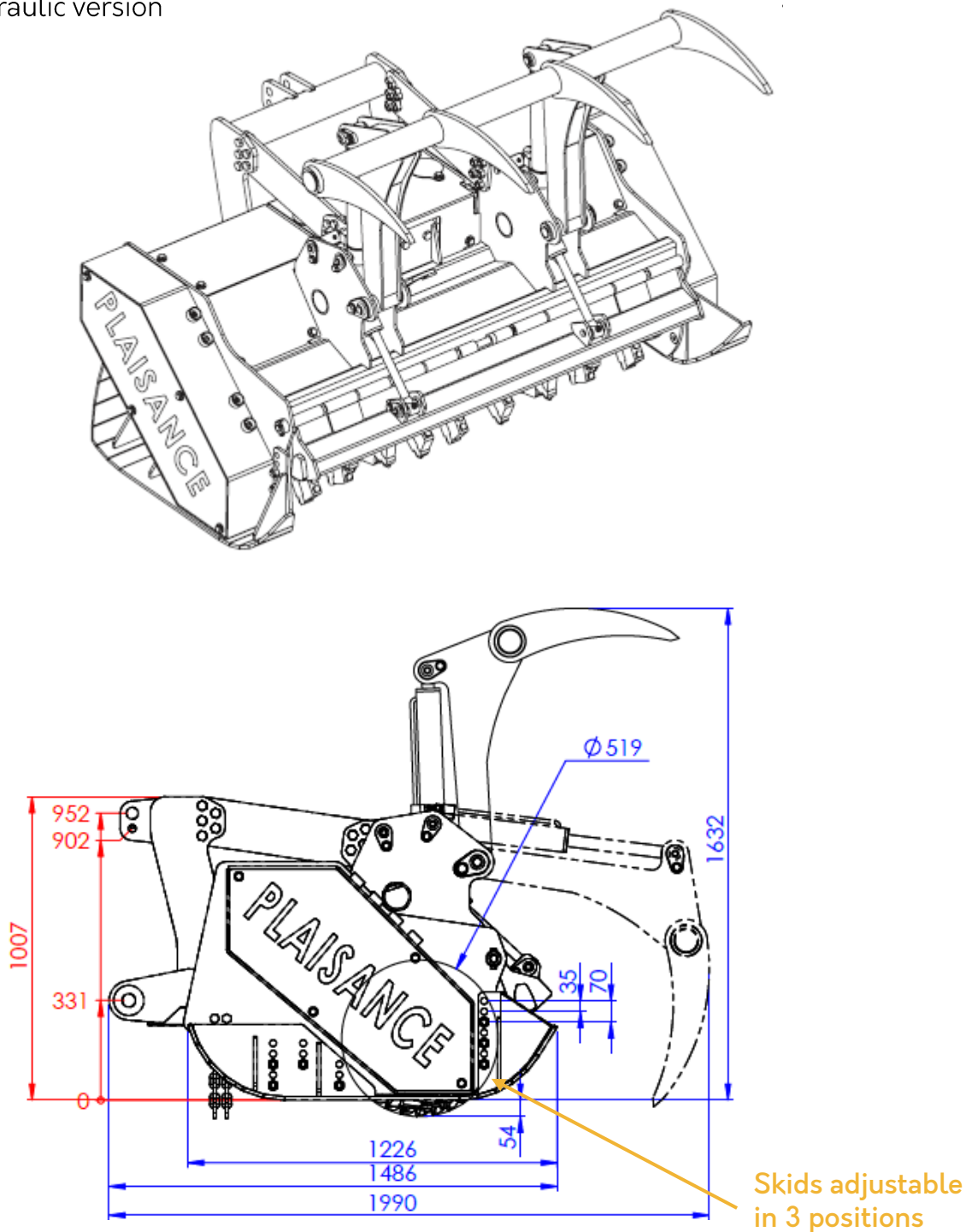
Side tool  
Triple carb tip

OFL8  
2 side teeth

*Our side teeth are the same on the left and right.*

## PLAN AND DIMENSIONS

Hydraulic version



Illustrations and dimensions are for guidance only.  
PLAISANCE EQUIPEMENTS reserves the right to modify them without notice.  
This plan is the property of PLAISANCE EQUIPEMENTS and may not be reproduced or  
transmitted without permission.  
All rights reserved

## **RAKES AND DOOR**



**Rakes raised – Door closed**



**Rakes raised – Door opened**



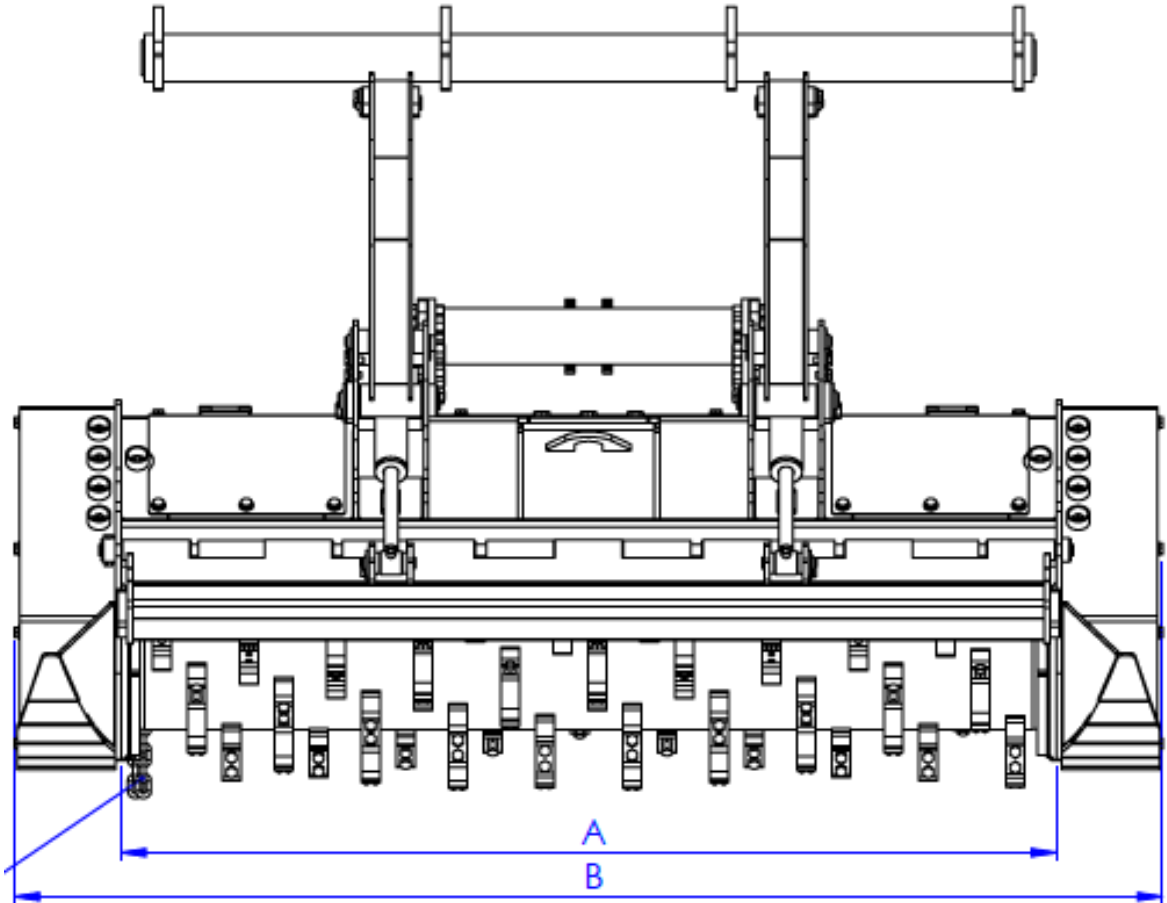
**Rakes lowered – Door closed**



**Rakes lowered – Door opened**

## WEIGHT AND DIMENSIONS (kg and mm)

Hydraulic version



Working width (A)	Overall width (B)	Weight
2000 mm	2464 mm	2300 kg
2200 mm	2664 mm	2400 kg

Illustrations and dimensions are for indication only.  
PLAISANCE EQUIPEMENTS reserves the right to modify them without notice.  
This plan is the property of PLAISANCE EQUIPEMENTS and may not be reproduced or  
communicated without permission.  
All rights reserved



